



VELOMET BASIC



VELOMET BASIC - WHAT...?

VELOMET is a ***NEW SYSTEM*** designed and developed by ***POSTIGO-SICO***, in order to create a ***NEW TOOL*** for the control of roads in special conditions.

The BASIC configuration let us to configurate a system in a very good conditions for the costumer:

- ***Easy to install.***
- ***Easy to mantain.***
- ***Easy to use.***
- ***Easy to move (if it is required).***
- ***And more...***

Ultimately: a lot of possibilities with COMPETITIVE PRICES.

VELOMET BASIC - WHY...?

?

THE QUESTION IS...

Why VELOMET...?

**LET ME SHOW YOU
AN EXAMPLE...**



VELOMET BASIC - WHERE...?

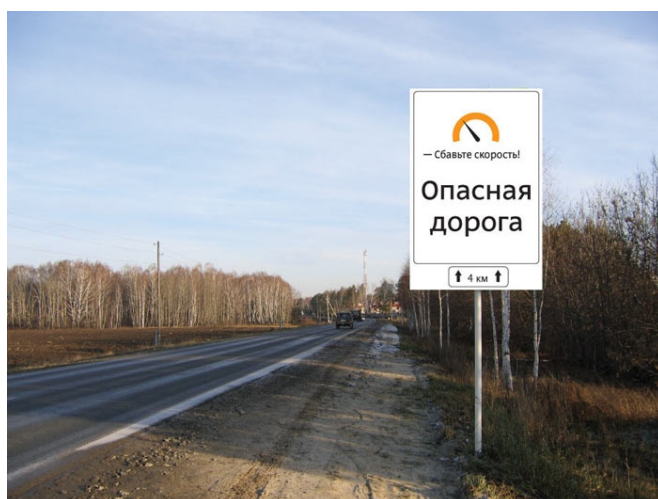
The answer is EASY: Wherever you WANT & Wherever you NEED...



CRASH ZONES...

TUNNELS...

HABITUAL INCIDENTS...



SPEED CONTROL...

RUSSIAN TRAFFIC...

HARD WINTER...

VELOMET BASIC - HOW...?

The answer is EASY: As you WANT & As you NEED...

VELOMET Basic is possible in TWO main CONFIGURATIONS:

- **VMS (Variable Messaging Signs) configuration.**
- **PRISM (Prism Signs) configuration.**

These configurations can be adapted in many different ways:

- **AUTOMATIC messaging generation.**
- **MODULAR Configuration: EXPANDABLE system.**
- **REMOTE & SUPERVISION Control.**
- **FIX and PORTABLE.**
- **WIND and SOLAR Power Supply Possibilities.**



VELOMET BASIC - VMS Configuration

VELOMET
BASIC
Fog



VISIBILITY

VELOMET
BASIC
Rain



RAIN

VELOMET
BASIC
Wind



WIND

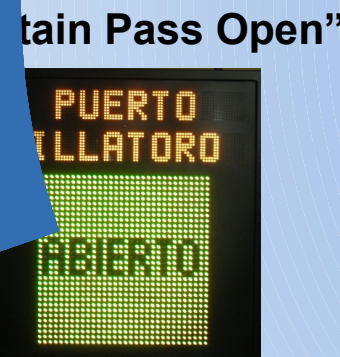
VELOMET
BASIC
Road



ROAD



VARIABLE MESSAGING SIGNS
PSVX-1ZG/32X32/P4-220/P1



"Reduce Speed"



VELOMET BASIC - PRISM Configuration

VELOMET
BASIC
Fog



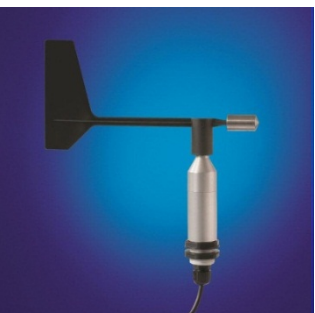
VISIBILITY

VELOMET
BASIC
Rain



RAIN

VELOMET
BASIC
Wind



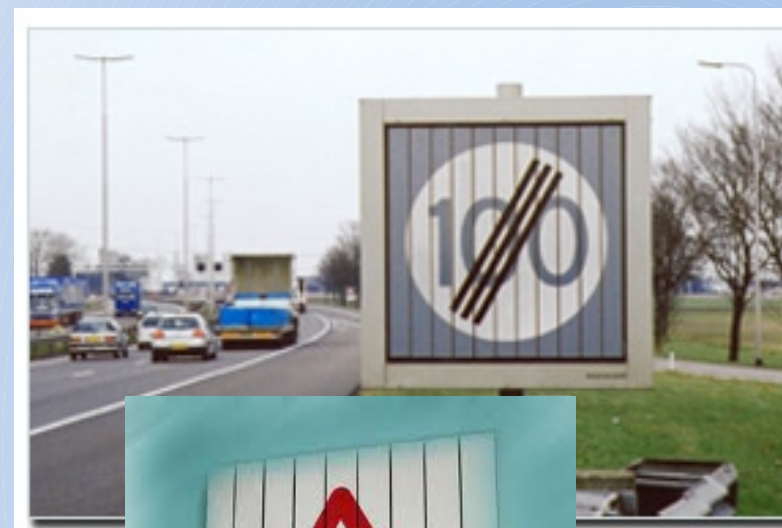
WIND

VELOMET
BASIC
Road



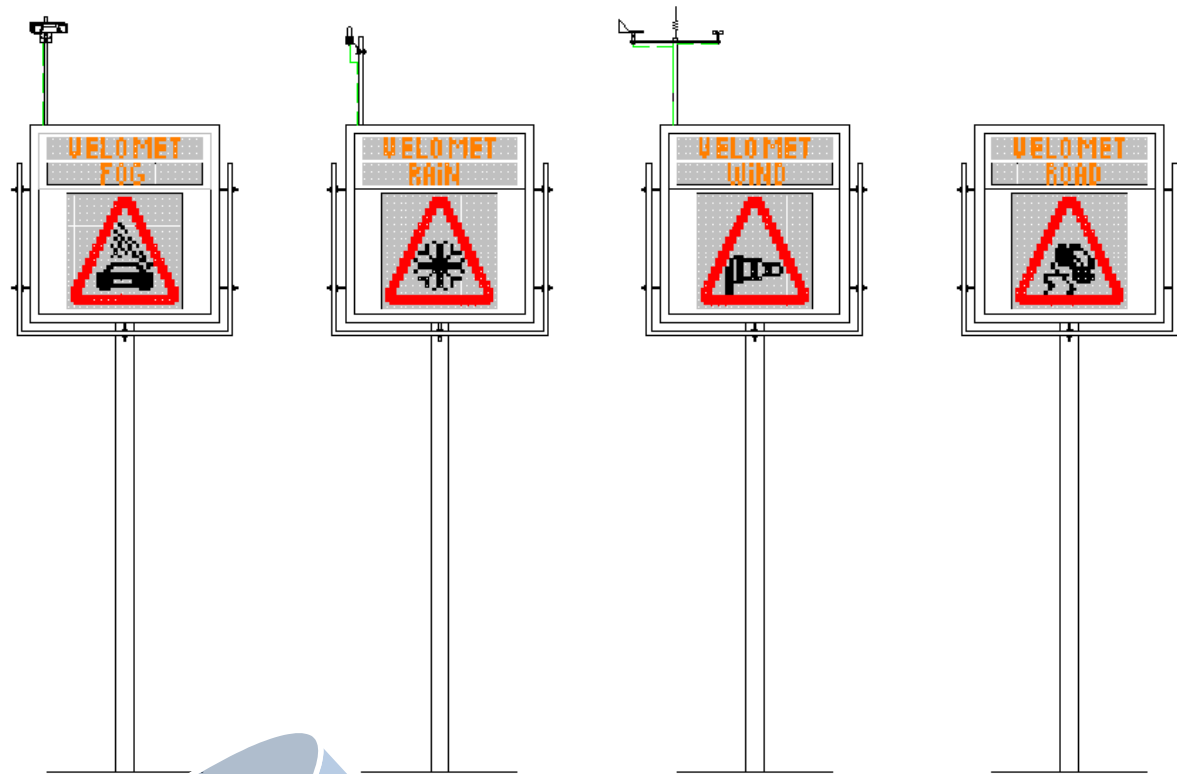
ROAD

“PRISM”
TRAFFIC SIGNS



READY TO USE!!!

VELOMET BASIC - APPLICATIONS

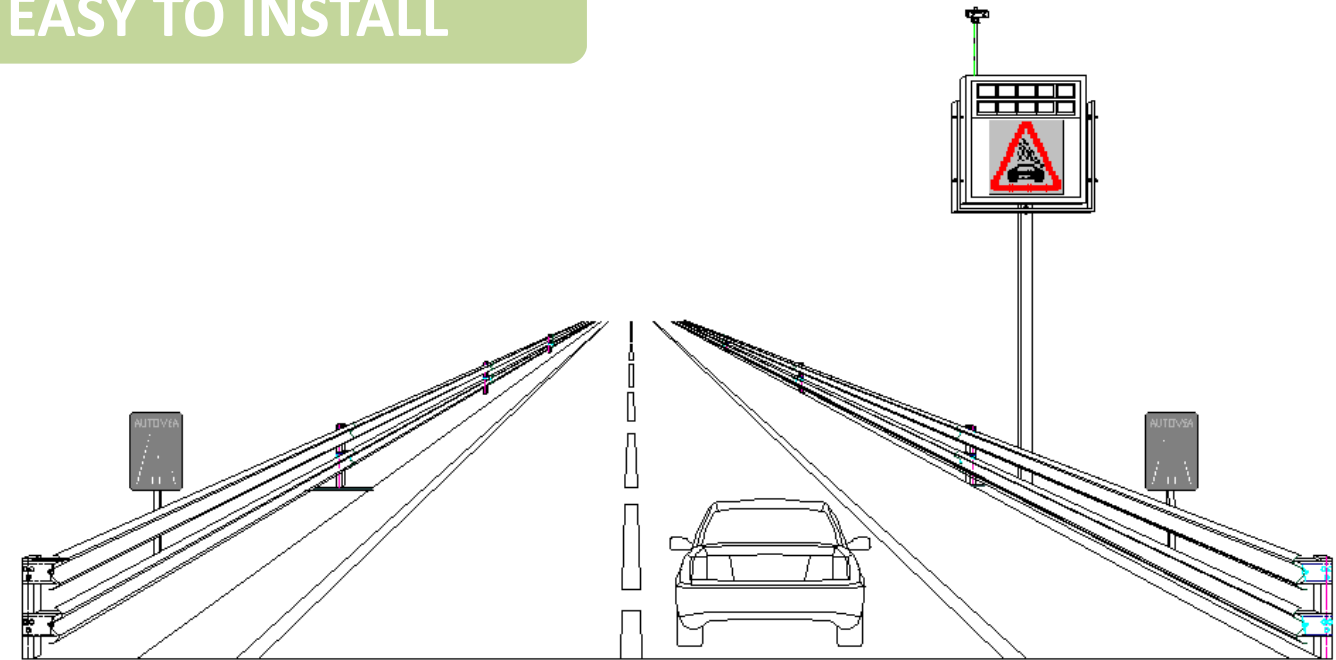


SIMPLE POST

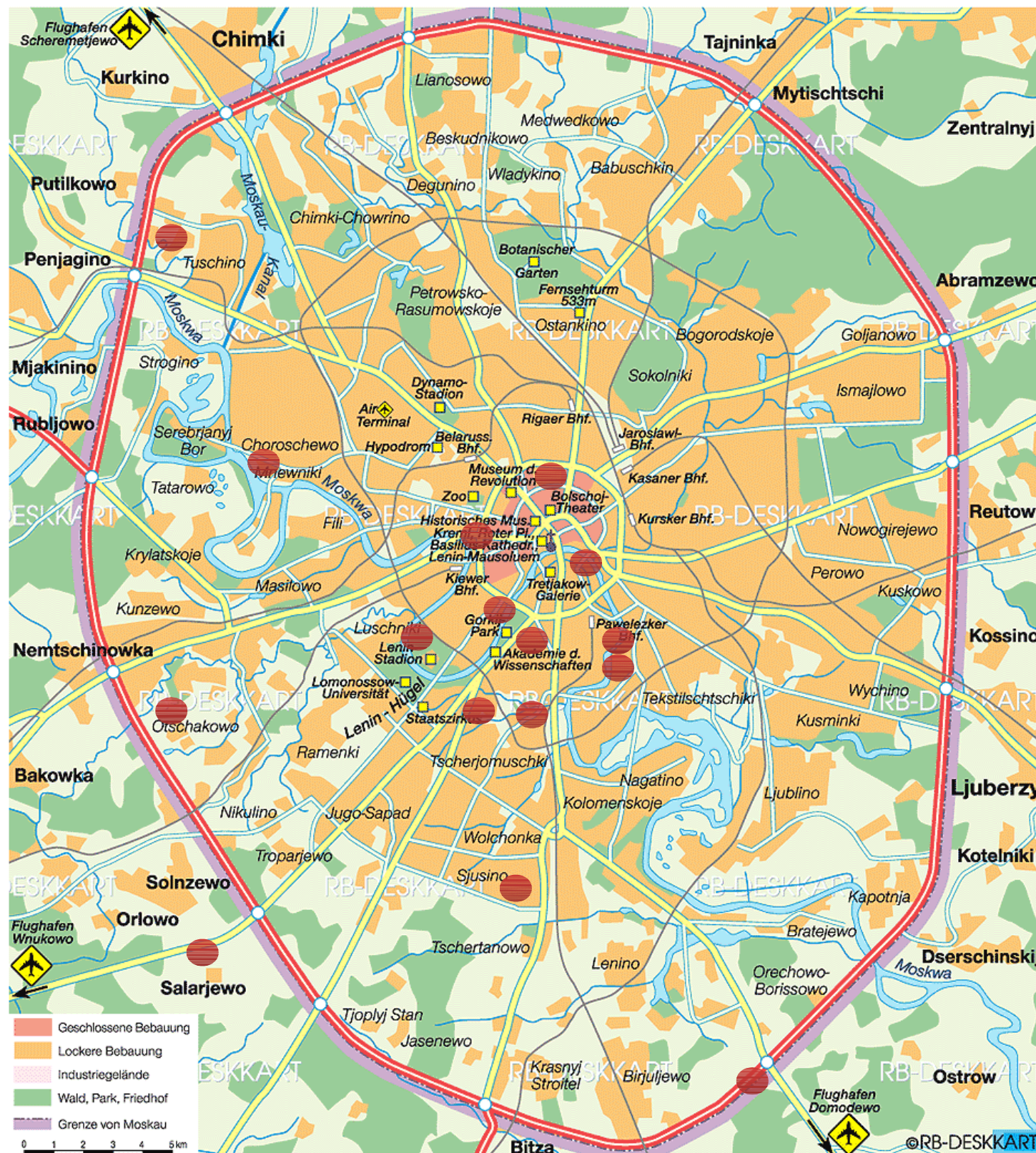
OR RESTRICTING

RECOMMENDING...

EASY TO INSTALL



VELOMET BASIC - CENTRAL CONTROL (CITY)



VELOMET Basic control Software can be installed in Control Centers to Supervise all the systems at the same time.

*VELOMET Basic has **AUTOMATIC** and **MANUAL** function modes. It's **NOT NECESSARY** ADITIONAL **PEOPLE** to control the system permanently.*



VELOMET BASIC - CENTRAL CONTROL (COUNTRY)





VELOMET BASIC

Thanks for your attention

